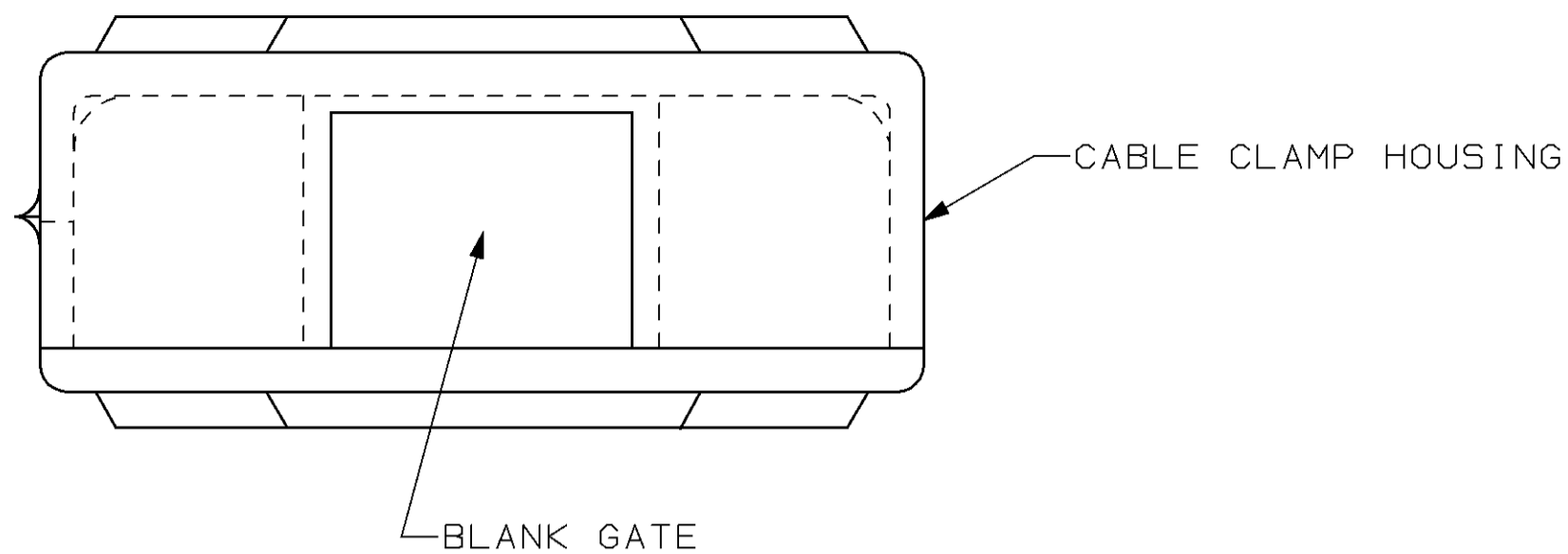
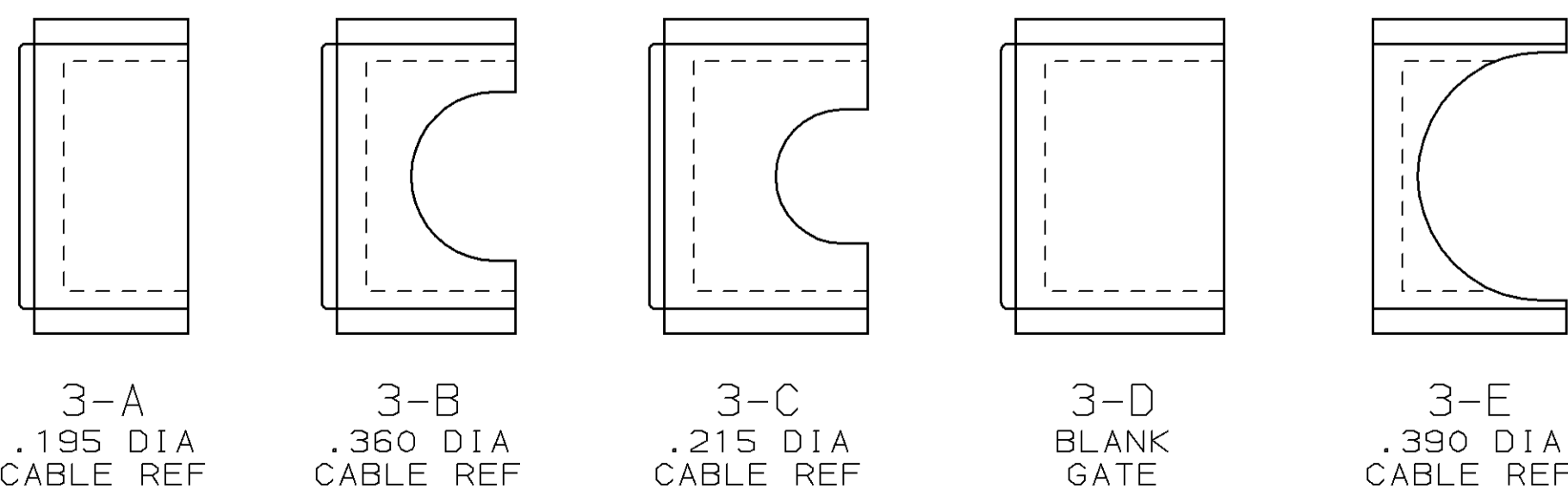
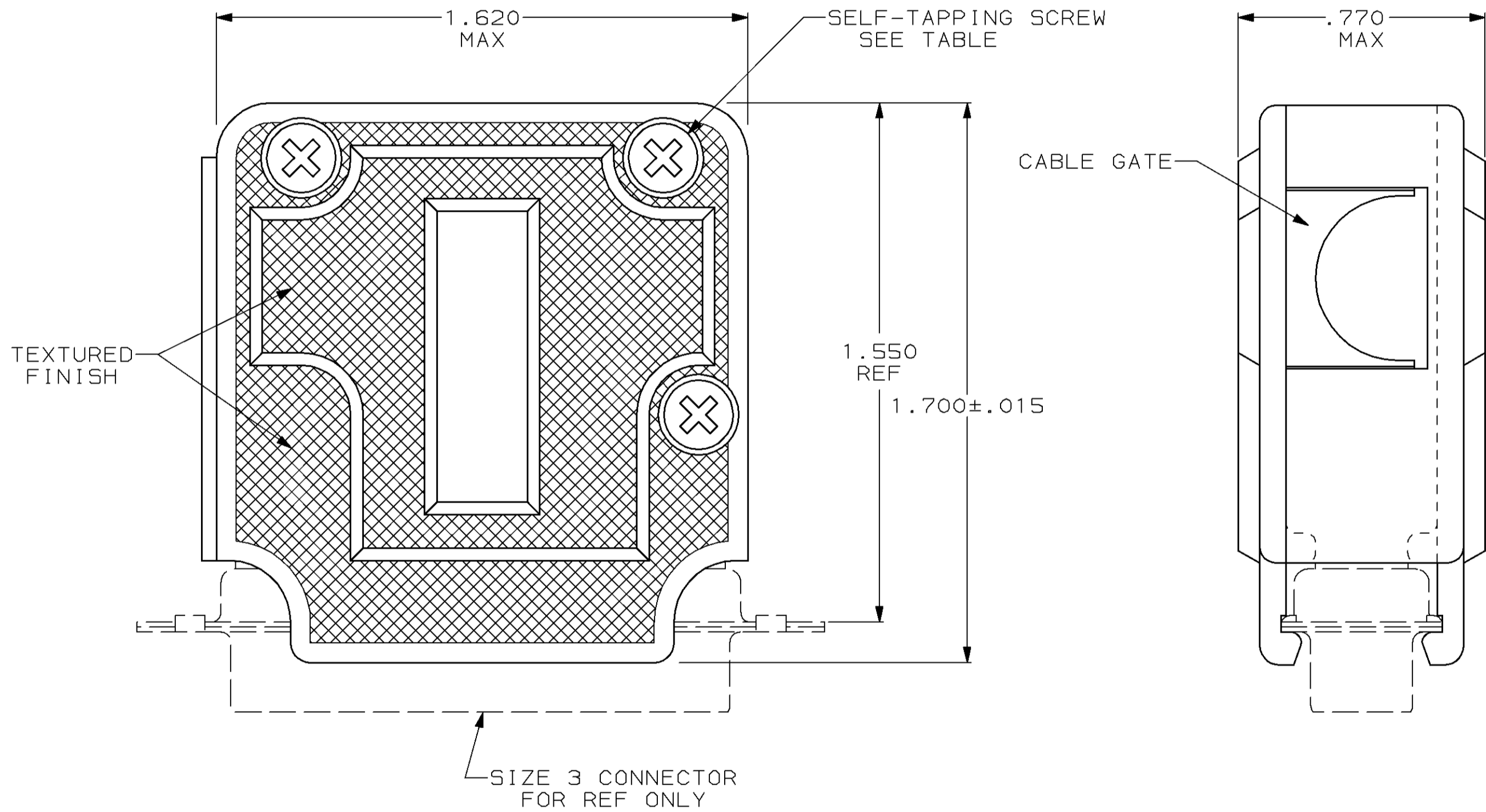


THIS DRAWING IS UNPUBLISHED. RELEASED FOR PUBLICATION, 19 .  
 © COPYRIGHT 19 BY AMP INCORPORATED, HARRISBURG, PA. ALL INTERNATIONAL RIGHTS RESERVED. AMP PRODUCTS MAY BE COVERED BY U.S. AND FOREIGN PATENTS AND/OR PATENTS PENDING.

LOC		DIST		P		F		REVISIONS			
BD	48			ZONE	LTR	DESCRIPTION	DATE	APPD			
					E	REV PER EC 0020-1140-95	19 DEC 95	JS			
					F	REV PER EC 0640-341-98	10 SEP 98	JK			



- PARTS PACKAGED UNASSEMBLED.
  - CABLE GATES ARE INTERCHANGEABLE ALLOWING 90° & 180° CABLE EXIT.
- ⚠ COMPONENTS INDIVIDUALLY BULK PACKED AND SHIPPED AS A UNIT PACKAGE KIT.



OBSOLETE	SLOTTED	⚠	207345-4
OBSOLETE	SLOTTED	AS SHOWN	207345-3
	CROSS-RECESSED	⚠	207345-2
	CROSS-RECESSED	AS SHOWN	207345-1
	SCREW VERSION	PACKAGING	PART NUMBER

UNLESS OTHERWISE SPECIFIED DIMENSIONS ARE IN INCHES TOLERANCES ON :	DR 9-16-86 S. WELDON	<b>AMP</b> AMP INCORPORATED Harrisburg, Pa. 17105		
2 PL DEC ± -	CHK 9-16-86 C. RICHARD			
3 PL DEC ± .005	APPD 9-16-86 S. SCHUFERLY	NAME CABLE CLAMP KIT, SIZE 3, ONE PIECE, 90° & 180° EXIT, AMPLIMITE®		
ANGLES ± -	APPD 9-16-86 V. KUMAR			
MATERIAL MOLDED PARTS: POLYPROPYLENE, COLOR: BLACK	PRODUCT SPEC	SIZE	FSCM NO	DRAWING NO
SCREWS: STEEL PER ASTM A108	APPLICATION SPEC	<b>C</b>	00779	207345
FINISH SCREWS: ZINC PHOSPHATE PER MIL-P-16232	WEIGHT	SCALE	NTS	SHEET 1 OF 1